

# OMNIA

TRK-3 Auto Kerato-Refracto Tonometer Pachymeter



A Simple  
Integrated  
4-in-1 Pretest  
Solution

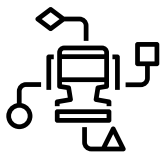
**TOPCON** Healthcare

# OMNIA

Consolidate objective refraction, keratometry, tonometry, and pachymetry into one simple and easy-to-use device, making diagnostics faster and more efficient.



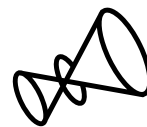
## OVERVIEW



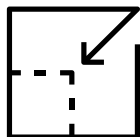
**4-in-1 Maximized**  
Workflow Efficiency



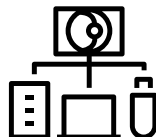
**Fully Automated**  
Reduced Training Time



**Rotary Prism Technology**  
Stable Measurements



**Compact Design**  
Space Optimization



**Multiple Data Connectivity**  
Seamless EMR Integration

## Faster, More Comfortable Exams

Experience quicker pretesting with OMNIA's one-touch user interface and air puff technology.

## Optimize Your Clinical Workflow

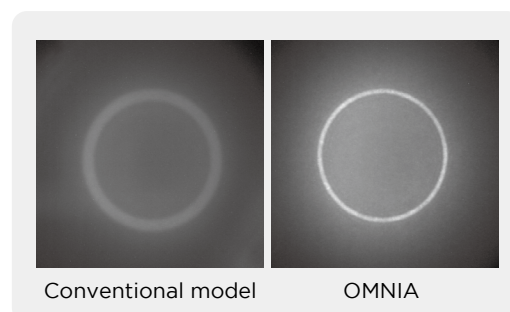
Gain unmatched flexibility with one-touch, fully automated user interface and 360° touch screen rotation. Optimize space, enhance efficiency, reduce training time, and ensure easy data capture, even for new users.



## Super Luminescent Diode (SLD)<sup>1</sup>

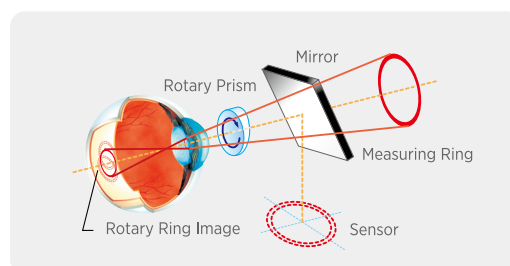
OMNIA uses a brighter light source to deliver clearer and higher-quality imaging than a standard LED, improving the success rate of measurements even in challenging conditions caused by media opacities.

<sup>1</sup> Available in REF/KRT measurements mode



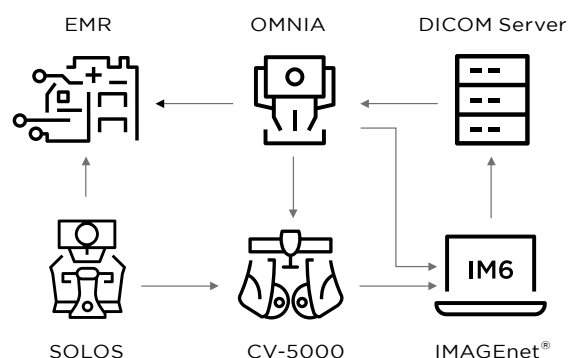
## Patented Rotary Prism Technology

With Topcon's Rotary Prism Technology, OMNIA provides stable measurements. The unique, eccentric rotation of the measurement ring is designed to reduce any artifact from the fundus.



## Multiple Connectivity Options

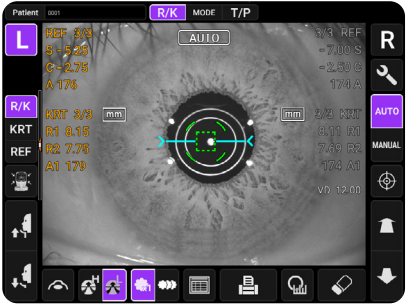
OMNIA can send examination data to CV-5000 and IMAGENet<sup>®</sup> via a shared folder. Connecting to a DICOM server makes it possible to receive a DICOM worklist, making OMNIA compatible with various network environments.



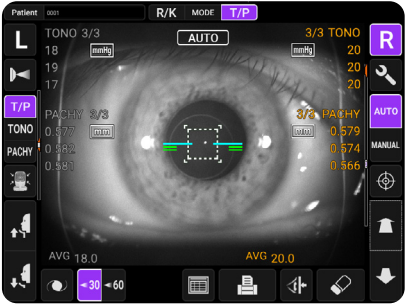
# SPECIFICATIONS

REF measurement	
Measurement range	Spherical refractive power: -25D to +22D (display value resolution: 0.12D or 0.25D) Astigmatic refractive power: 0D to $\pm 10D$ (display value resolution: 0.12D or 0.25D) Direction of astigmatic axis: 0° to 180° (display value resolution : 1° or 5°) (where spherical refractive power + astigmatic refractive power $\leq +22D$ , or spherical refractive power + astigmatic refractive power $\geq -25D$ ) The dioptric powers are indicated with reference wavelength $\lambda_d = 587.56nm$ .
Measurable minimum pupil diameter	$\phi 2.0mm$
PD measuring range	20mm to 85mm (display value resolution: 1mm)
KRT measurement	
Measuring range	Corneal curvature radius: 5.00mm to 10.00mm (display value resolution: 0.01mm) Corneal refractive power: 67.50D to 33.75D (display value resolution: 0.12D or 0.25D) (where corneal refractive power = 1.3375 ) Direction of corneal principal meridian: 0° to 180° (display value resolution: 1° or 5°)
Corneal diameter measurement	
Measuring range	2.00mm to 14.00 mm (display value resolution: 0.25mm)
Intraocular pressure measurement	
Measuring range	7mmHg to 60mmHg (display value resolution: 1mmHg) (average value resolution: 1mmHg or 0.1mmHg)
Measuring mode	7mmHg to 30mmHg or 30mmHg to 60mmHg (selectable range)
Corneal thickness measurement	
Measuring range	0.400mm to 0.730mm (display value resolution: 0.001mm)
Other specifications	
Electric rating	Source voltage: 100-240V AC Frequency: 50-60Hz Power input: 80VA
Dimensions and weight	Dimensions : 13-16.6in (332-422mm) (W) x 22.4-25.9in (569-658mm) (D) x 20-29.9in (504-760mm) (H) Weight : 51lb (23.2kg)

## Control Screen Images



R/K Mode (REF/KRT measurements)



T/P mode (TONO/PACHY measurements)

TOPCON HEALTHCARE, INC.  
111 Bauer Drive, Oakland, NJ 07436, U.S.A.  
Phone: +1-201-599-5100  
topconhealthcare.com

### Auto Kerato-Refracto Tonometer | TRK-3 OMNIA

**IMPORTANT** In order to obtain the best results with this instrument, please be sure to review all user instructions prior to operation.  
Not all products, services, or offers are available in all markets. Contact your local distributor for country-specific information and availability.



TOPCON CORPORATION  
75-1 Hasunuma-cho, Itabashi-ku, Tokyo 174-8580, JAPAN.  
Phone: +81-(0)3-3558-2522/2502  
Fax: +81-(0)3-3965-6898  
www.topconhealthcare.jp

