

Inspire[®]

LIGHTWEIGHT MEDICAL TESTING HEADSET

Perimetry, Patient Education, Practice Building





PERIMETRY, PATIENT EDUCATION, PRACTICE BUILDING

Upgrade your practice with super lightweight, comfortable vision testing technology - Inspire Medical Testing Headset. Modernize your patients' visual field testing experience while streamlining your clinical workflow with Inspire perimetry, patient education, and practice building media tools in high-definition virtual reality.

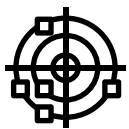


Inspire® is now the first visual field that patients in the practice will take, and its far outnumbering the number of traditional bowl based tests we get on any given day.

Nathan Radcliffe, MD

I think every Glaucoma doctor has this challenge, that is in trying to find a system that is comfortable for a patient to use, that they don't mind using at every visit.

Shamil Patel, MD



**Includes SAP
Test Patterns**



**Weights just
6.4 ounces**



**Functions in
Ambient Light**



No Patch

LIGHTWEIGHT

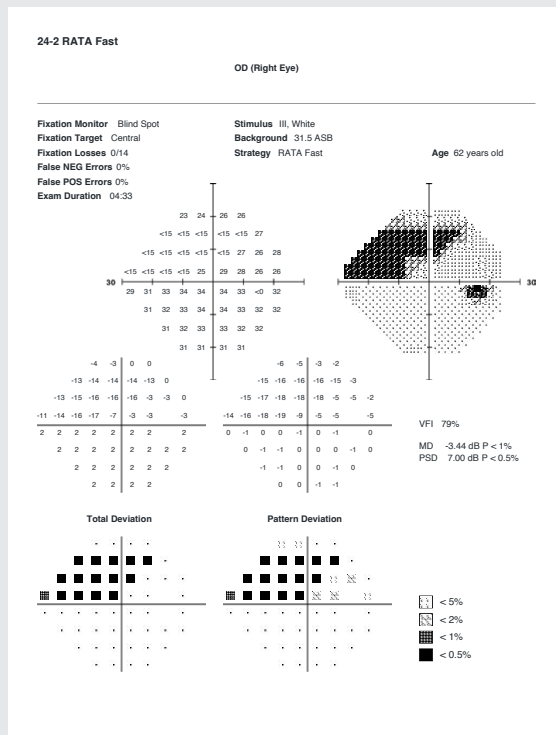
At just 6.4 ounces (without light seal), Inspire® is among the lightest wearable testing devices in the market

ACCURATE

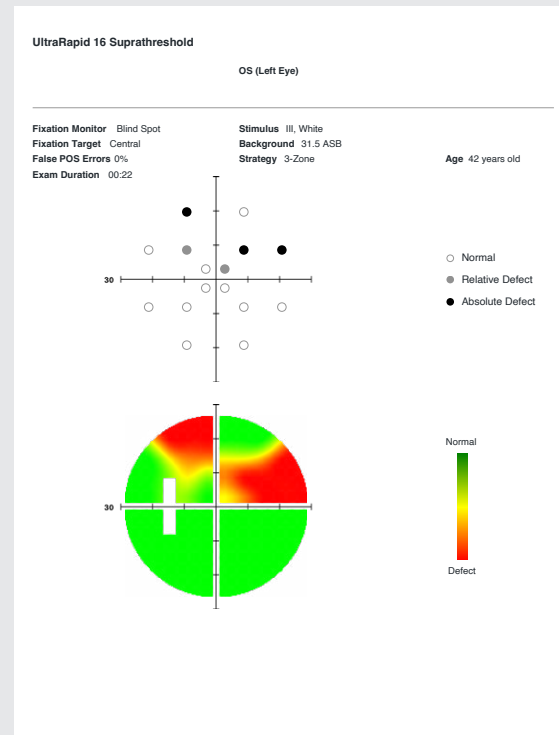
0.94 correlation in mean deviation (MD) to HFA¹

MULTIFUNCTIONAL

Not just a wearable perimeter, but a platform for patient education and practice engagement



24-2 SFA Report



Screening Report

Radius VRP is statistically non-inferior to HFA when staging glaucoma using Medicare definitions.

HIGH CORRELATION

The NOVA Clinical Trial confirmed that Inspire test results correlate strongly with current clinical standard testing for sensitivities at individual test locations, glaucoma staging using Medicare definitions, and mean deviation (0.94).¹ These results underscore the accuracy and reliability of Inspire visual field testing.

SCIENTIFIC RIGOR

translational
vision science &
technology
an ARVO journal

March 2024
Vol. 13, No. 3

Image from Khreish et al.

March 2024
Volume 13, Issue 3

ISSUE

OPEN ACCESS

Glaucoma | March 2024

Validation of a Wearable Virtual Reality Perimeter for Glaucoma Staging, The NOVA Trial: Novel Virtual Reality Field Assessment

Chris Bradley; Iqbal Ike K. Ahmed; Thomas W. Samuelson; Michael Chaglasian; Howard Barnebey; Nathan Radcliffe; Jason Bacharach

+ Author Affiliations & Notes

Translational Vision Science & Technology March 2024, Vol.13, 10.
doi:<https://doi.org/10.1167/tvst.13.3.10>

SPECIFICATIONS

Peripheral range (distance)	Up to 70°
Stimulus dynamic range	15-40 dB
Background illumination	31.5 asb
Stimulus size	Goldman III
Stimulus duration	200 ms
Stimulus generation	Static Perimetry
Test methods	Monocular, White on White Perimetry
Test patterns	30-2, 24-2, 10-2, UltraRapid 16, Rapid 50
Test strategies	RATA Standard, RATA Fast, 3-Zone Suprathreshold
Fixation controls	Central
Correction range	0 to -8D
Pupillary distance	61-69 mm
Optical System of Visual Target Presentation	2.1" LCD Panel with Pancake Lens
Headset Weight	9.6 ounces (6.4 ounces without light seal)
Networking	Wi-Fi/Ethernet, DICOM, PDF, JPG File Output



Inspire® and Maestro2 OCT glaucoma testing is powered by Harmony®, a simple clinical data management solution that helps drive better patient outcomes.

1. <https://tvst.arvojournals.org/article.aspx?articleid=2793455>

This product is manufactured by RadiusXR®.

IMPORTANT In order to obtain the best results with this instrument, please be sure to review all user instructions prior to operation.

Not all products, services or offers are approved or offered in every market, and products vary from one country to another. Contact your local distributor for country-specific information and availability.

TOPCON HEALTHCARE, INC.

Phone: +1-201-599-5100 | [topconhealthcare.com](https://www.topconhealthcare.com)