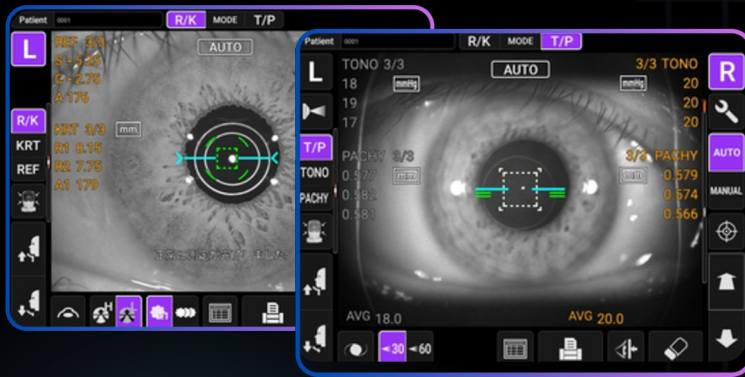


DISCOVER THE ALL-NEW

OMNIA

TRK-3 Auto Kerato-Refracto
Tonometer Pachymeter

The Ultimate 4-in-1
Patient Screening Solution



OMNIA FEATURES

- ✓ Auto Refraction
- ✓ Auto Keratometry
- ✓ Non-contact Tonometry
- ✓ Pachymetry

KEY FEATURES



One-Touch Fully Automated User Interface



Quick Data Capture¹



360° Touch Screen Rotation



Softer and Quieter Air Puff



Advanced Rotary Prism Technology and SLD Light Source



Multiple Data Connectivity Options Including DICOM

LEARN MORE AT [TOPCONHEALTHCARE.COM/OMNIA](https://www.topconhealthcare.com/omnia)

¹ EI-Nimri, N. (2023). TRK-3 OMNIA Pre-pivotal Study [Unpublished internal study]. Topcon Healthcare Innovation Center.